

LOAD CELL CL 16M

- High accuracy and reliability
- High stability and repeatability
- Tension and compression mode
- Low profile
- Insensitive against out of alignment forces
- Two year warranty and after sales service



Weight load cell is assigned for use in weighing systems with one or several transducers.

The load cell is working tensile and compressive. Measured load is converted into signal due to metal spring element with strain full bridge. The bridge is balanced and thermal compensated. The hermetic housing is made from stainless steel.

For electrical protection IP40 the sensor has attached a connector.

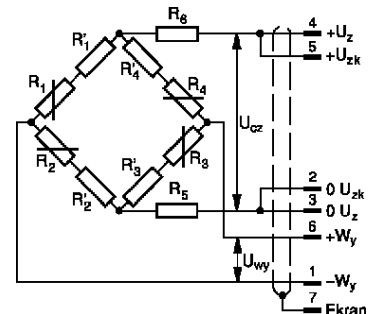
For electrical protection IP68 the sensor is equipped with stuffing on connection cable.

Specifications:

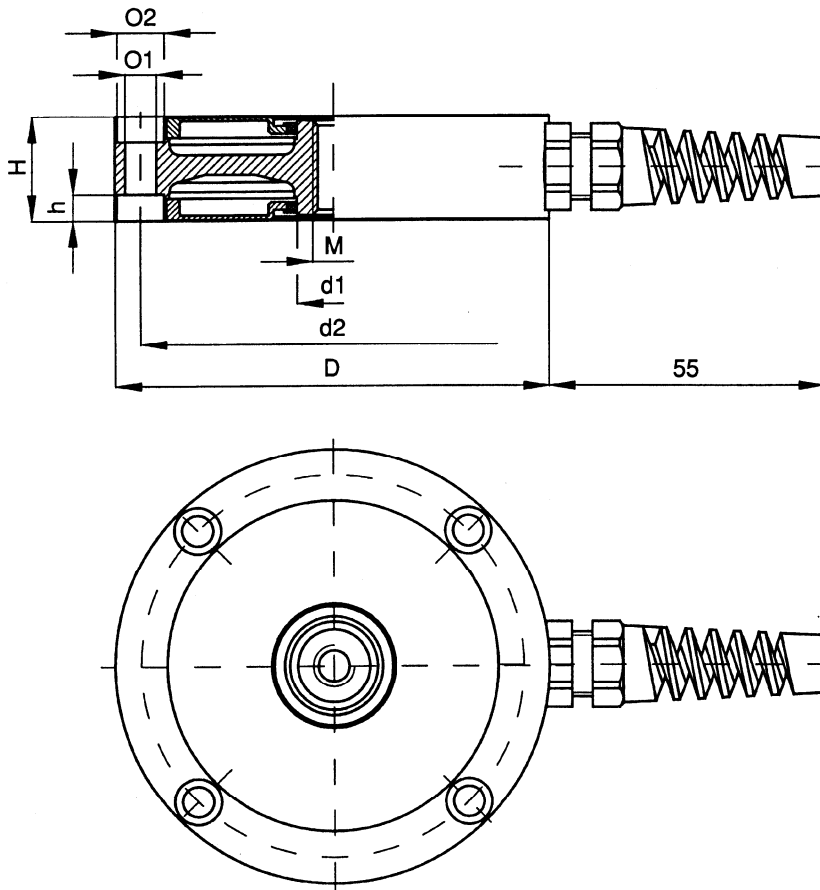
Range	[t]	0,1; 0,2; 0,5; 1, 2, 5, 10, 20, 50
Non-linearity	[%]	0,5
Total error	[%]	$< \pm 0,018$
Return to zero	[%]	$\pm 0,2$
Return to zero after unloading from nominal load	[%]	$\leq 0,03$
Strain gauge resistance	[Ω]	350
Input resistance	[Ω]	aluminium 410, steel: 380
Output resistance	[Ω]	≥ 350
Zero point deviation	[%/30 min]	$\leq 0,03$
Temperature effect on the sensitivity	[%/10K]	$\leq 0,05$
Temperature effect on zero t	[%/10K]	$\leq 0,05$
Nominal voltage supply	[V]	10
Output signal	[mV/V]	1- R1; 2- R2
Insulation resistance	[GW]	1
Overload capacity	[%]	150
Operating temperature	[$^{\circ}$ C]	-20 ÷ 80
Compensated temperature range	[$^{\circ}$ C]	20 ÷ 70
Maximal strain	[mm]	0,1
Connectors		LUMBERG (Z1); O-Ring gland (O1)
Protection degree		IP40, IP68
Dimensions		as in table
Material of spring element		stainless steel
Cable length		3 m (standard) or optional

Designations and wiring for R1 / R2:

1 brown	$-W_y$
2 pink	$0 U_{zk}$
3 white	$0 U_z$
4 yellow	$+U_z$
5 grey	$+U_{zk}$
6 green	$+W_y$
7 black	shield



Load cell CL 16M



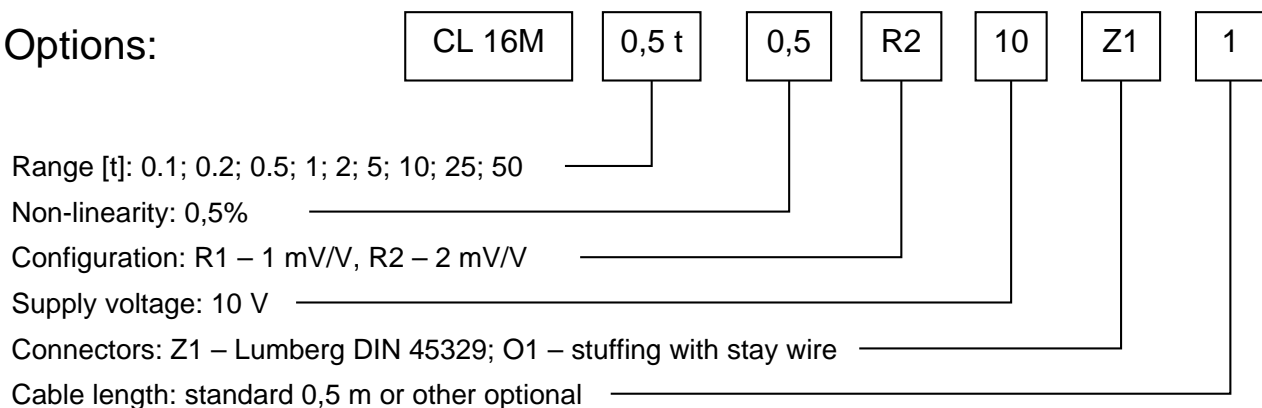
Quality assurance

Each sensor is detailed examined after manufacturing process. The producer offers 36 month warranty for the sensor and after that time also repair and calibration services.

Dimensions:

Range	D	H	M	d1	d2	O1	O2	h
t	mm							
0,1	85	20	M8	13	74	6,4	10,4	6,2
0,2	85	20	M8	13	74	6,4	10,4	6,2
0,5	85	20	M8	13	74	6,4	10,4	6,2
1	125	28	M12	23	110	8,4	13	8,3
2	128	35	M24x2	40	110	105	15,5	10,3
5	128	35	M24x2	40	110	10,5	15,5	10,3
10	174	40	M36x3	57	145	13	19	15
20	180	60	M39x3	65	155	175	25	19
50	290	100	M72x4	113	235	21	31,	23

Options:



Example of options for ordering:

CL 16M – 0,5 t – 0,5 – R2 – 10- Z1 – 1: load cell with dimensions as in table, range 0,5 t; non-linearity 0,5%; sensitivity 2 mV/V; connector Lumberg; cable length 1m.

Manufacturer:

ZEPWN sp. z o.o. s.k., 05-270 Marki, ul. Kołtątaja 8
 tel.: (00 48 22) 781 21 69, 771 24 11, e-mail: zepwn@zepwn.com.pl, <https://www.zepwn.com.pl>